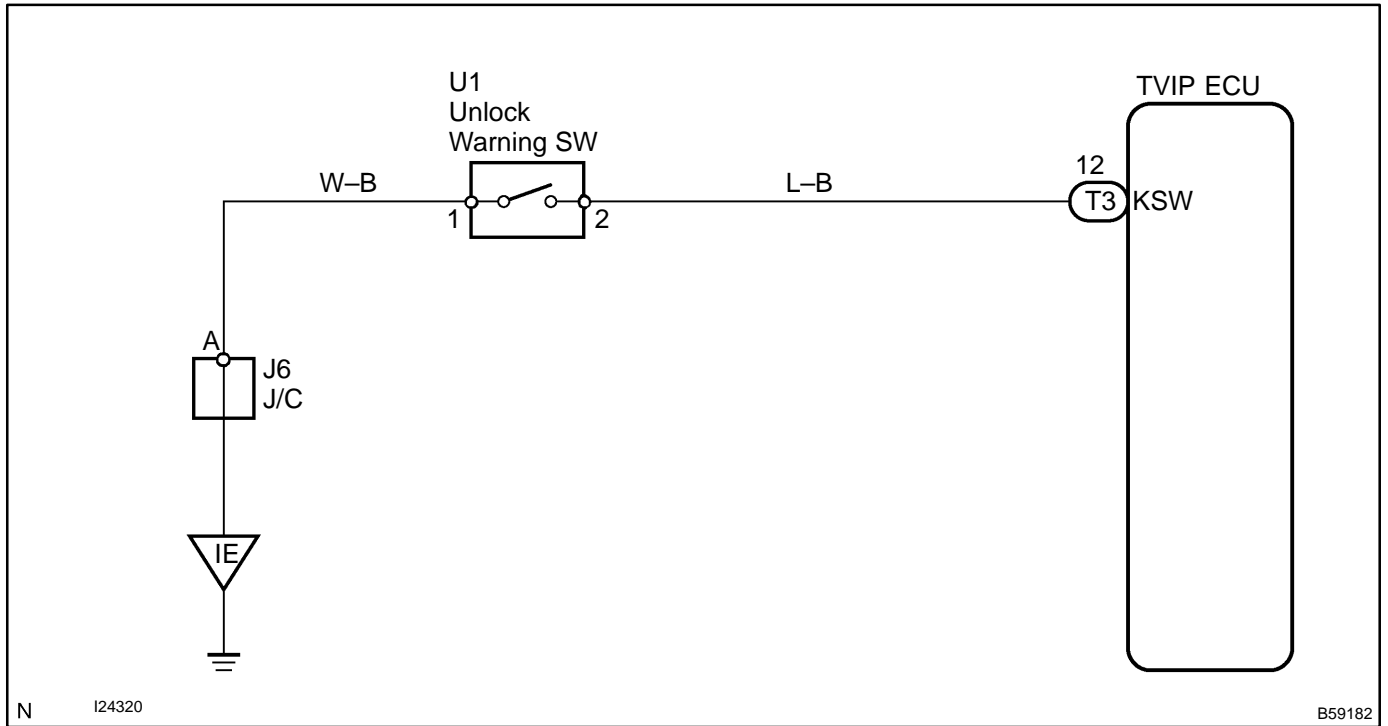


# KEY UNLOCK WARNING SWITCH CIRCUIT

## CIRCUIT DESCRIPTION

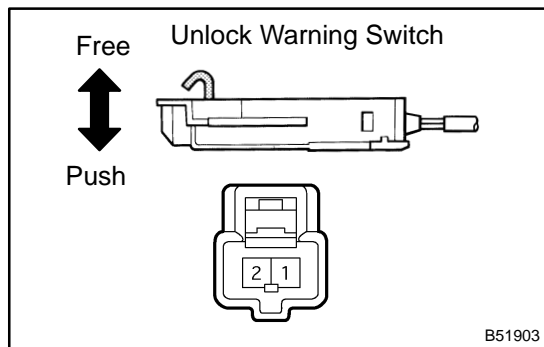
The key unlock warning switch comes on when the ignition key is inserted in the key cylinder and goes off when the ignition key is removed.

## WIRING DIAGRAM



### INSPECTION PROCEDURE

#### 1 CHECK UN-LOCK WARNING SWITCH ASSY



- (a) Disconnect the key unlock warning switch connector.
- (b) Check the continuity between the terminals of the key unlock warning switch connector, as shown in the illustration and table.

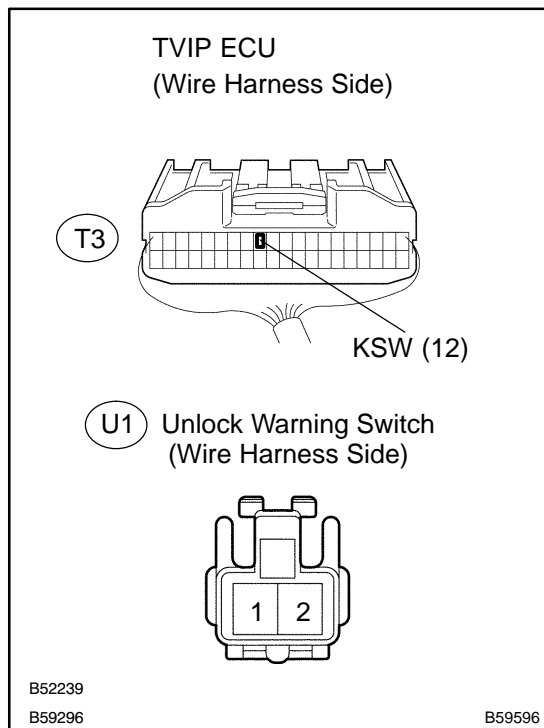
**Standard:**

Terminal No.	Switch position	Specified condition
1 ↔ 2	Push (Key inserted)	Continuity
	Free (Key removed)	No continuity

**NG** → REPLACE UN-LOCK WARNING SWITCH ASSY

**OK**

#### 2 CHECK WIRE HARNESS (TVIP ECU ↔ UNLOCK WARNING SWITCH)



- (a) Disconnect the TVIP ECU and key unlock warning switch connectors.
- (b) Check the continuity between the terminals of the TVIP ECU connectors and unlock warning switch connector, as shown in the illustration and table.

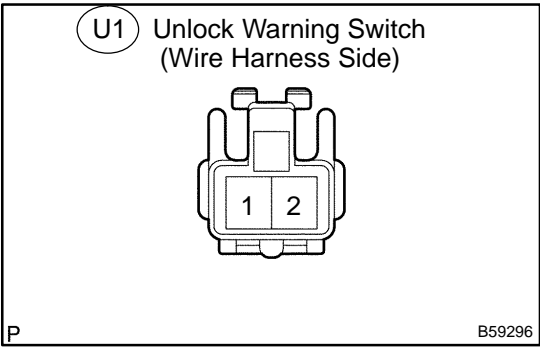
**Standard:**

Symbols (Terminal No.) (TVIP ECU ↔ Unlock warning switch)	Specified condition
KSW (T3-12) ↔ U1-2	Continuity

**NG** → REPAIR OR REPLACE WIRE HARNESS AND CONNECTOR

**OK**

**3 CHECK WIRE HARNESS (KEY UNLOCK WARNING SWITCH ⇔ BODY GROUND)**



- (a) Disconnect the key unlock warning switch connector.
- (b) Check the continuity between the terminal of the key unlock warning switch connector and the body ground, as shown in the illustration and table.

**Standard:**

Terminal No. (Key unlock warning SW ⇔ Body ground)	Specified condition
U1-1 ⇔ Body ground	Continuity

**NG** → **REPAIR OR REPLACE WIRE HARNESS AND CONNECTOR**

**OK**

**CHECK AND REPLACE TVIP ECU (See page 01-30)**