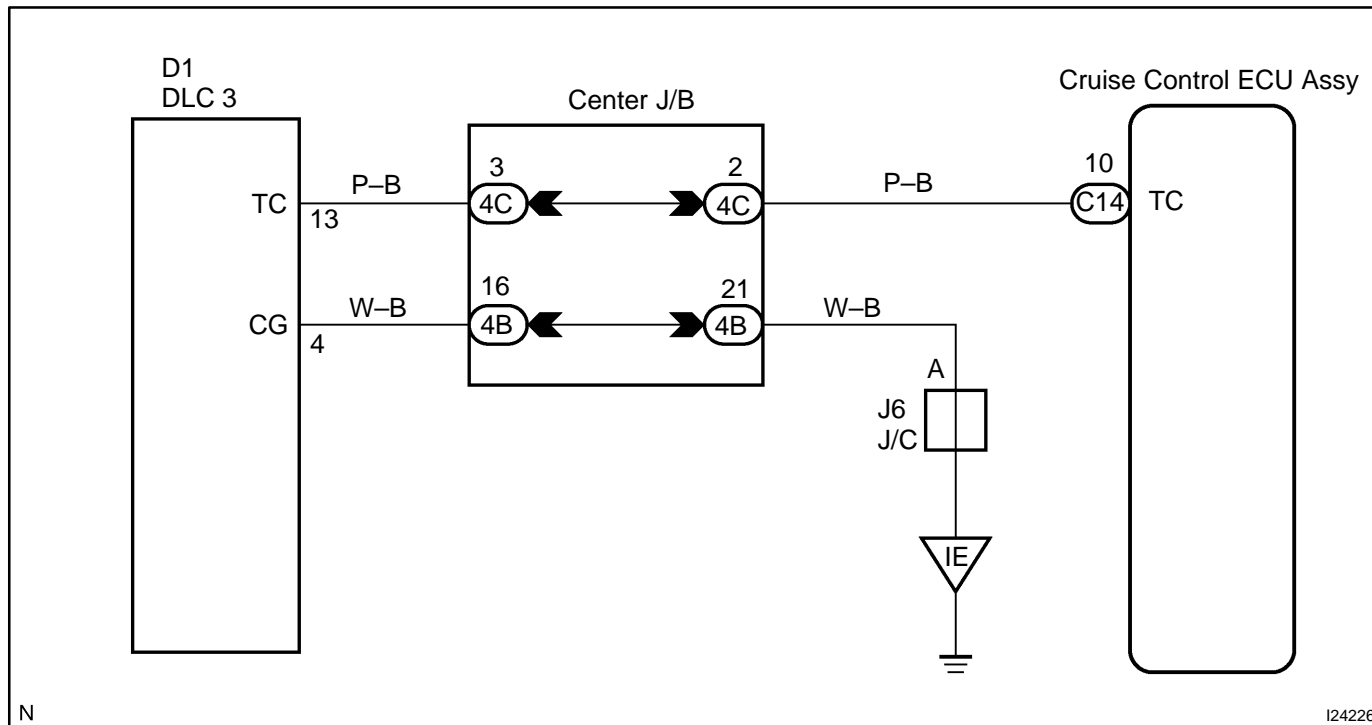


DIAGNOSIS CIRCUIT

CIRCUIT DESCRIPTION

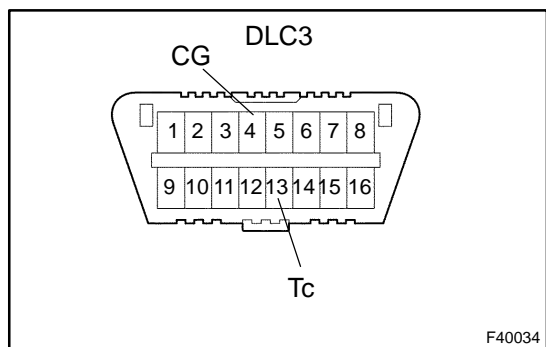
This circuit sends a signal to the cruise control ECU Assy that DTC output is required.

WIRING DIAGRAM



INSPECTION PROCEDURE

1 INSPECT DLC3 TERMINAL VOLTAGE



- (a) Turn the ignition switch to ON.
 - (b) Measure voltage between terminals 13 (Tc) and 4 (CG) of DLC3.
- OK:**
Voltage: 10 – 16 V

OK → **PROCEED TO NEXT CIRCUIT INSPECTION SHOWN ON PROBLEM SYMPTOMS TABLE (See page 05-754)**

NG

2	CHECK HARNESS AND CONNECTOR(BETWEEN CRUISE CONTROL ECU ASSY AND DLC3)
----------	--

- (a) Check for open and short circuit in harness and connector between cruise control ECU assy and DLC3 (See page [01-30](#)).

NG

REPAIR OR REPLACE HARNESS OR CONNECTOR

OK

CHECK AND REPLACE CRUISE CONTROL ECU ASSY (See page [01-30](#))