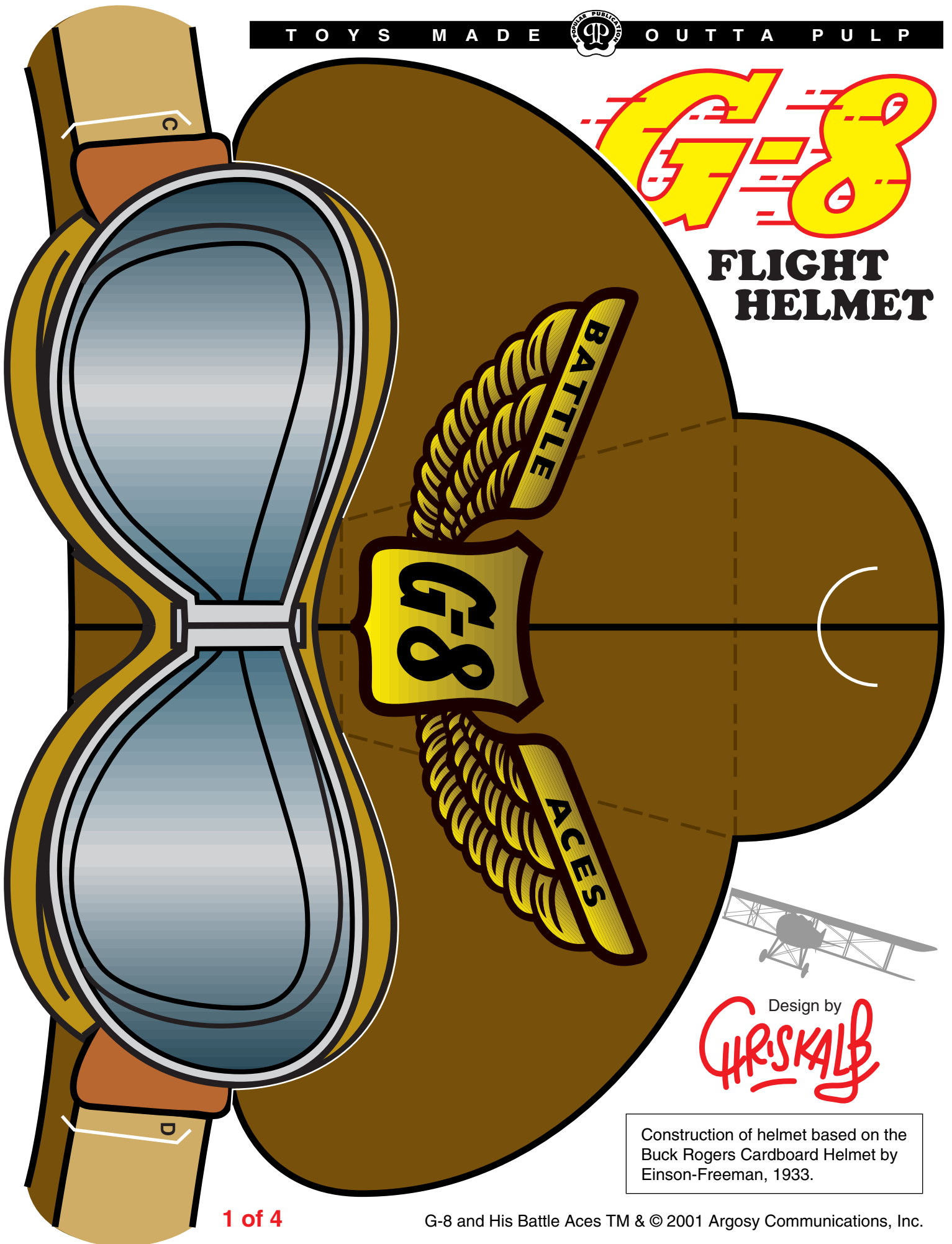




# FLIGHT HELMET



Design by  
**CHRISKALB**

Construction of helmet based on the  
Buck Rogers Cardboard Helmet by  
Einson-Freeman, 1933.

MADE  OUTTA PULP



## FLIGHT HELMET





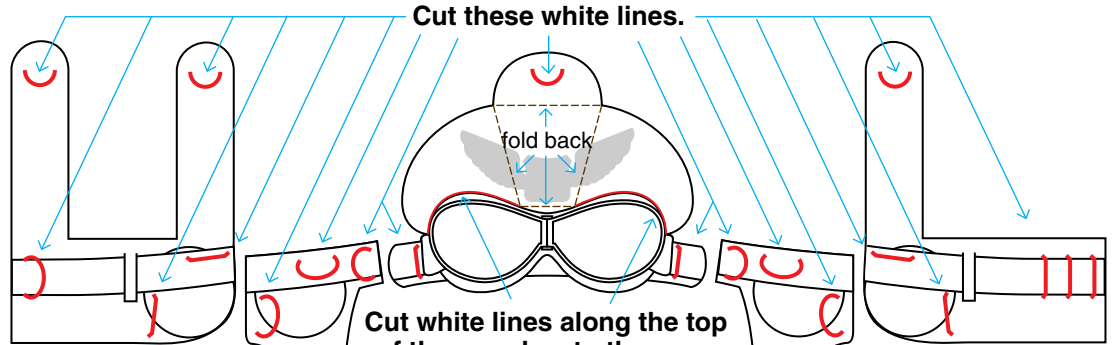
# G-8

## FLIGHT HELMET



B

A



**1. Print, and cut out the pieces.** Also cut along the white lines shown in the diagram.

**2. Join the five pieces at the lettered tabs.** Keep the two ear pieces to the front of the two side and face pieces as tab A is pushed back and slid into slot A, and so on. (No letters will be showing.)

**3. Join at the back,** choosing the slot that makes for the best fit, or cutting a new one, if required. Note that the "goggles" do not cover the eyes, but have the look of resting on the forehead.

**Note:** If you need to improve how the helmet fits, print these pages at a slightly different size, by choosing "Page Setup" from the "File" menu of the Adobe Acrobat Reader, and typing in a percentage.

**4. Join at the top,** sliding the sides together, then the back & front.

