

# BLOOMFIELD



A

APPROXIMATELY  
**3979** SQUARE FEET

5 BEDROOM

4.5 BATH

2 CAR GARAGE

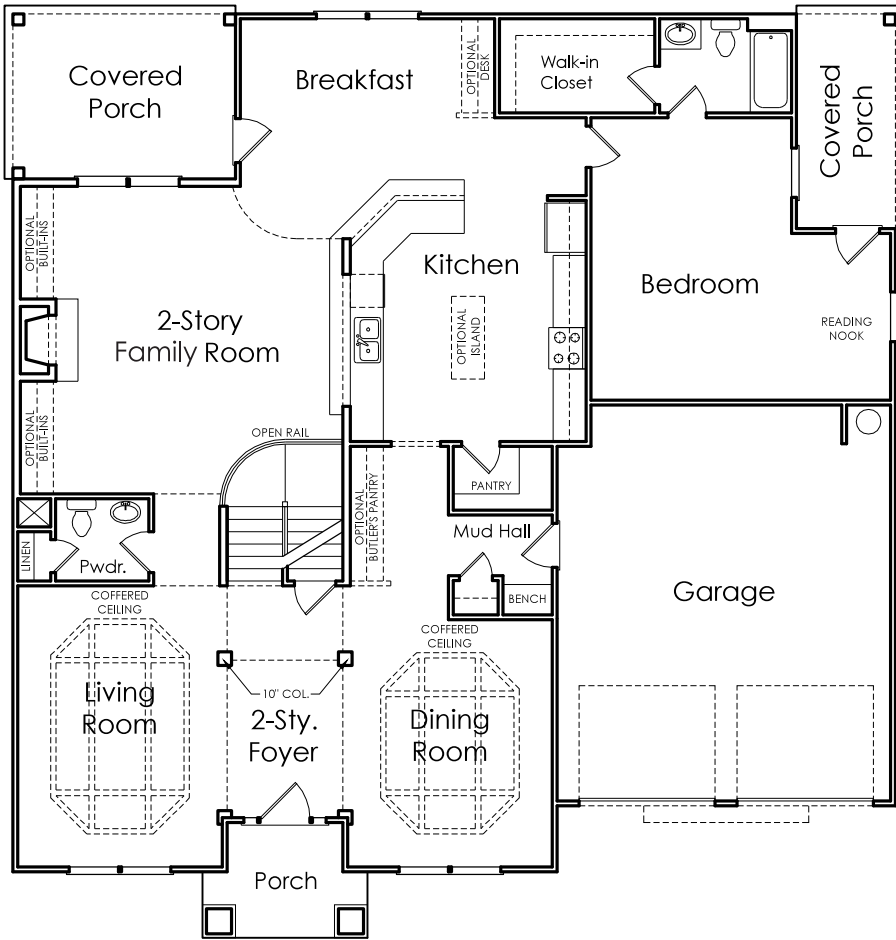
**LEGENDARY**  
Communities

Floorplans and elevations are artist's concepts and may vary in precise detail from the plan and specifications. Actual Images may not reflect finished product. Actual Construction Materials may vary per elevation. Legendary Communities reserves the right to change prices, plans, dimensions, specifications and features without notice. Single, Double and Triple Car Garages may vary per elevation. Subject to errors, omissions, deletions and availability. **REVISED: 10/10/2012**

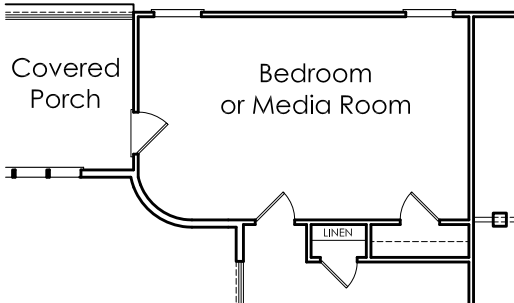


Where your  
New Home search  
**ENDS.**

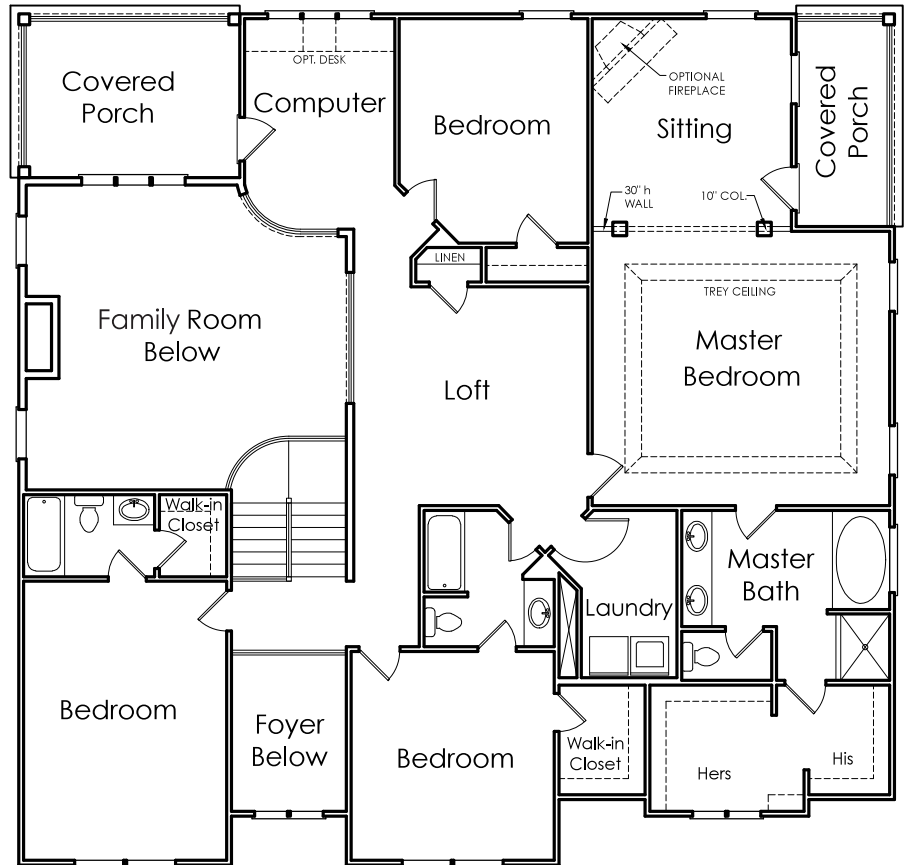
# BLOOMFIELD



## FIRST FLOOR



OPTIONAL BEDROOM OR MEDIA ROOM  
INSTEAD OF COMPUTER AREA &  
BEDROOM



## SECOND FLOOR