

Tutorial : How to make your own Multiboot Recovery CD

- We will need the following programs :-

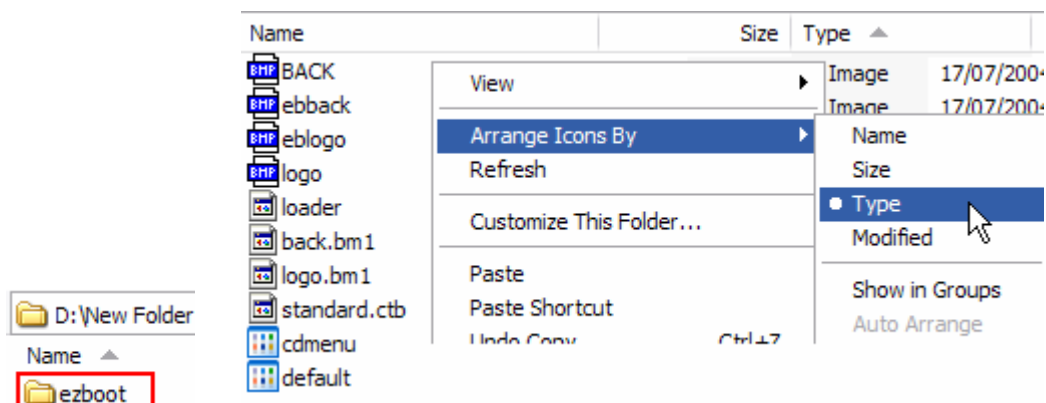
1. Ultraiso : where we will use it to extract the Boot file from the iso CDs and also to Build our one
2. Easyboot : we will need it to build our menu and make the links between the command and the boot files

- Steps :-

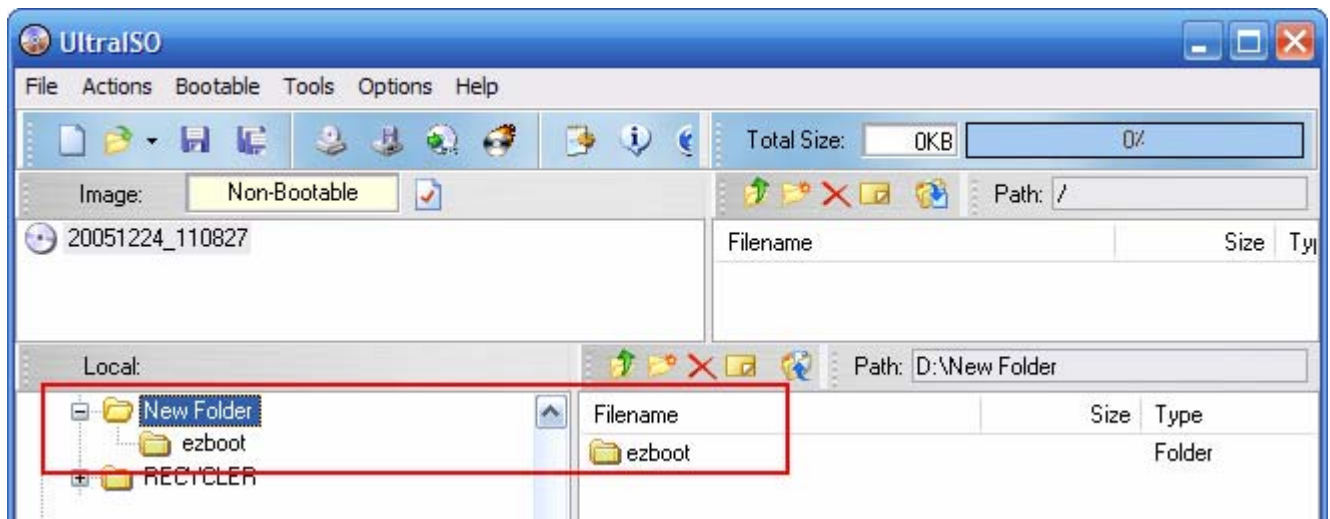
First of all, bring all the iso CDs you need to merge into big boot CD and have them handy

Name ▲	Size	Type
ERD2005	184,720 KB	UltraISO File
Hiren's.BootCD.7.6	59,656 KB	UltraISO File
MSDOS622	6,658 KB	UltraISO File
multiboot disk	21,684 KB	UltraISO File
najjargroup.net	81,864 KB	UltraISO File
ubcd 3.3 - full	190,848 KB	UltraISO File
Utility.CD.for.8cm.CDR-W.V.6.70	227,722 KB	UltraISO File
windows boot cd	17,890 KB	UltraISO File

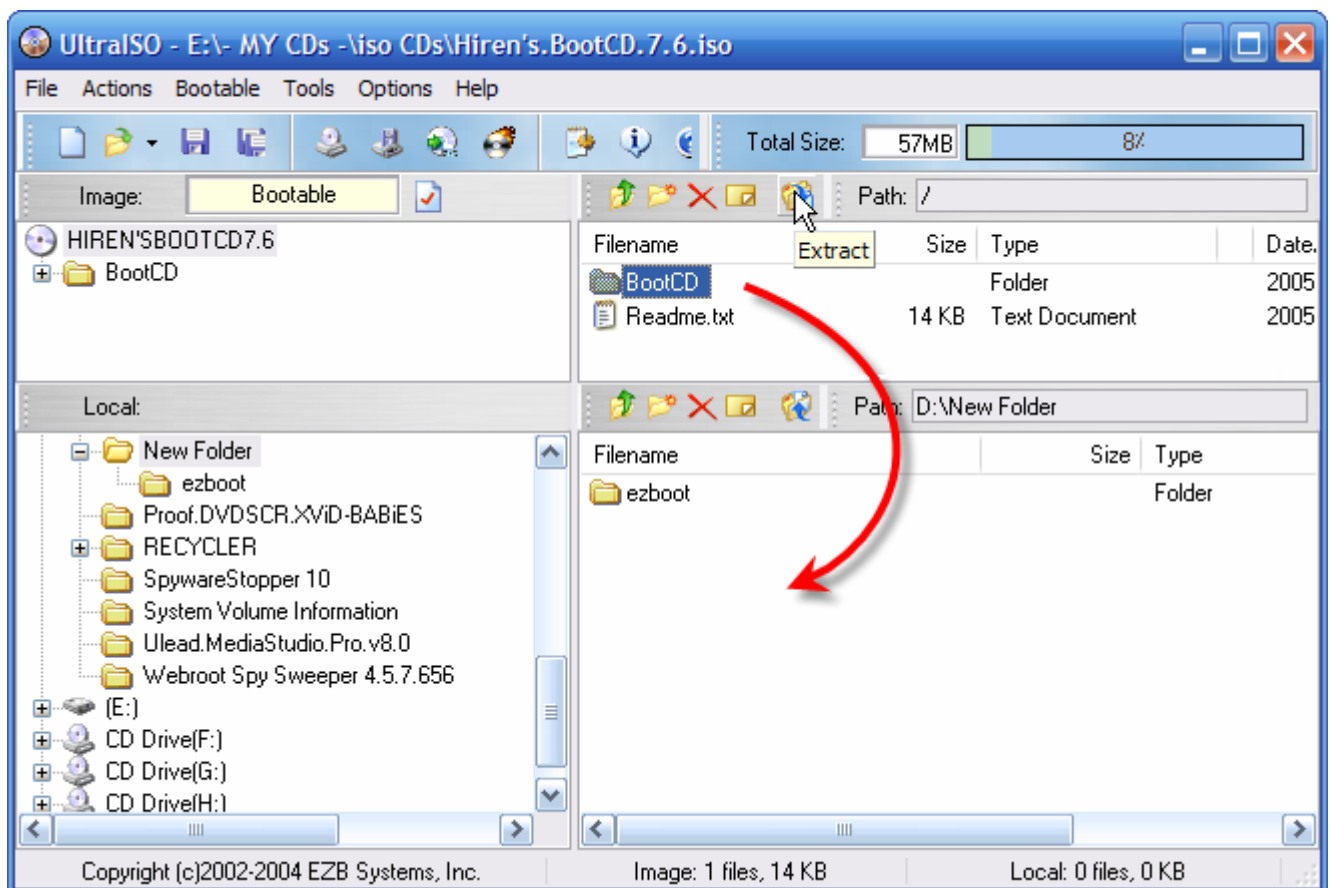
now we need to make a working folder, i know we can work inside the Easyboot itself, but i like to work in a working folder to keep the files in easyboot safe if needed later. Therefore we will copy the folder " ezboot " from its original location to an other place as in the pic.



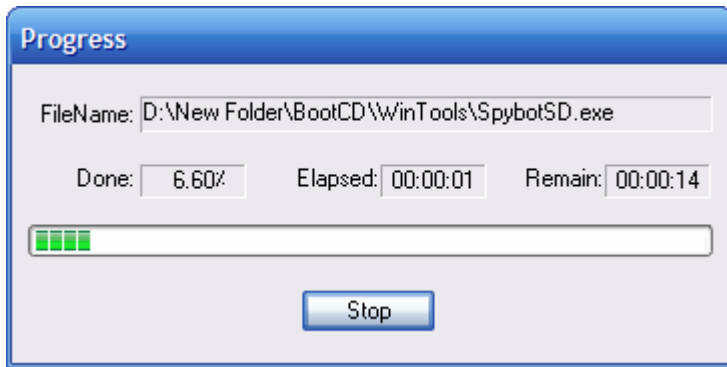
Then it is better to arrange the files by type, this is optional ... it do help me to have the boot files all together...



Now we go to Ultraiso, make sure the lower part is set to your working folder as we will extract the content of the iso CDs into that part

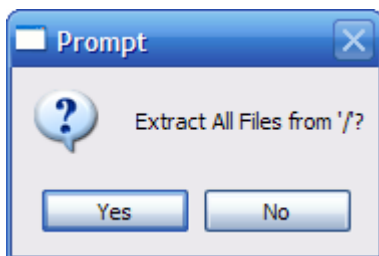


We will take the Hiren's CD as an example , get it loaded into the Ultraiso and then we will extract the content into the working folder by selecting the things we need to extract and then pressing on the extract button , yah i did not select the readme one as it do not contain much , but it is up to you if want to add it or not



When you extract the selected items the following popup will appear to you

Note that if you want to extract ALL the content , then you do not need to select them all , just press the extract button and the program will know that you want to have it all from the root , and then the popup will change into this one



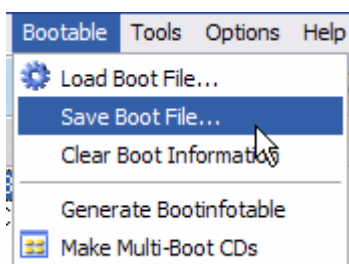
The " / " means that the program will extract all the content from its root

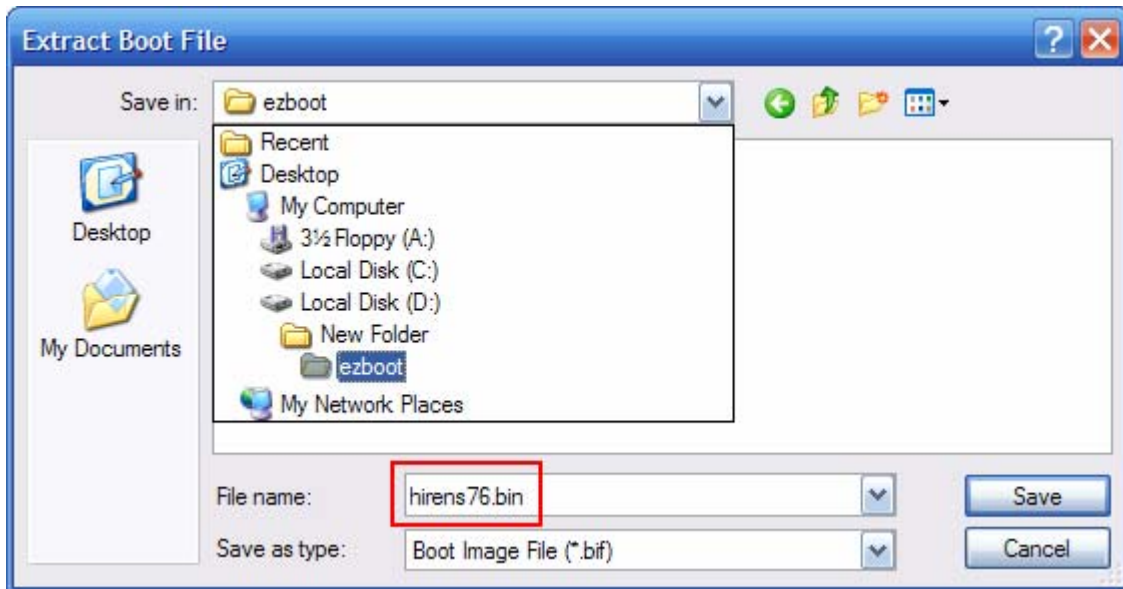
Filename	Size	Type
BootCD		Folder
ezboot		Folder

- Then we should have something like this when we are done :

[How to save the boot file ?](#)

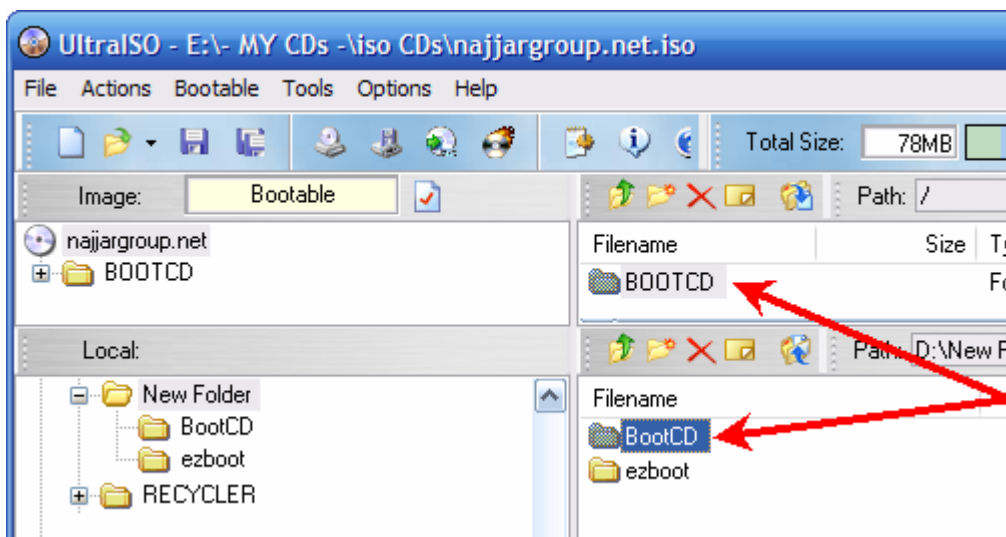
While the iso CD is still loaded in the Ultraiso , go to the Bootable menu and select " Save Boot File " as in the picture





Save the boot file into your WORKING folder , and select a good name for it

Save the boot file with the extension " bin " not bif as shown in the picture



Now repeat the steps with the rest of the iso ones you have.

What are the problems you may have ?

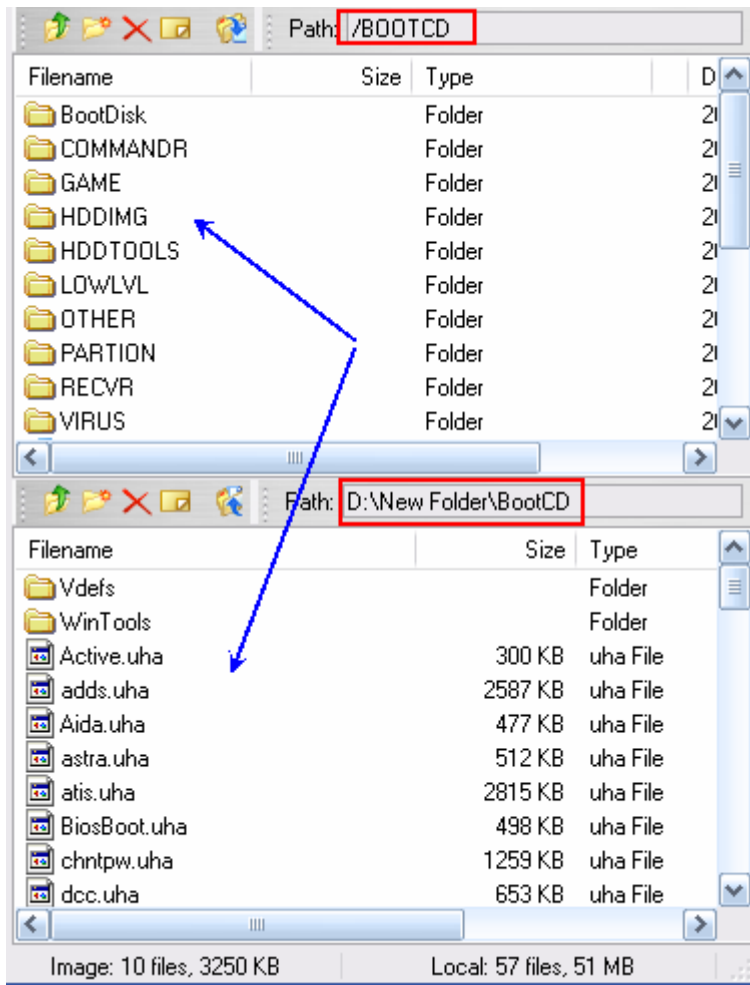
There is one big problem you may have while building your own CD, it is in the duplication of the folders and/or files

let us take an example here , now after i added the Hirens one , i went to add Najjar Boot CD ... when i did load it into ultraiso i found out that both Najjar and Hirens have the same Folder >>> BootCD

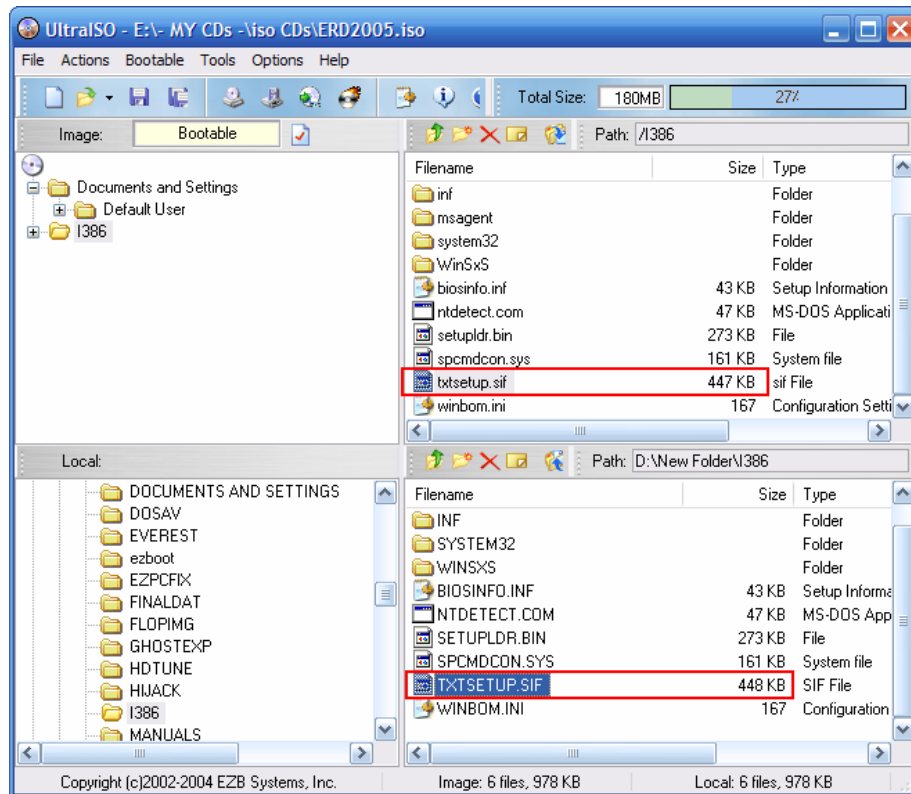
So what we do here is to open each folder, and take your time to compair between them, if there is a duplication in files then you can not add this CD, if not then it is ok

to add it but instead of extracting the files from the iso into the working folder root , we will extract into the folder that have the same name as in the CD

take a look here



now you can see the duplicated names in folders so we open each one and take a look to the content

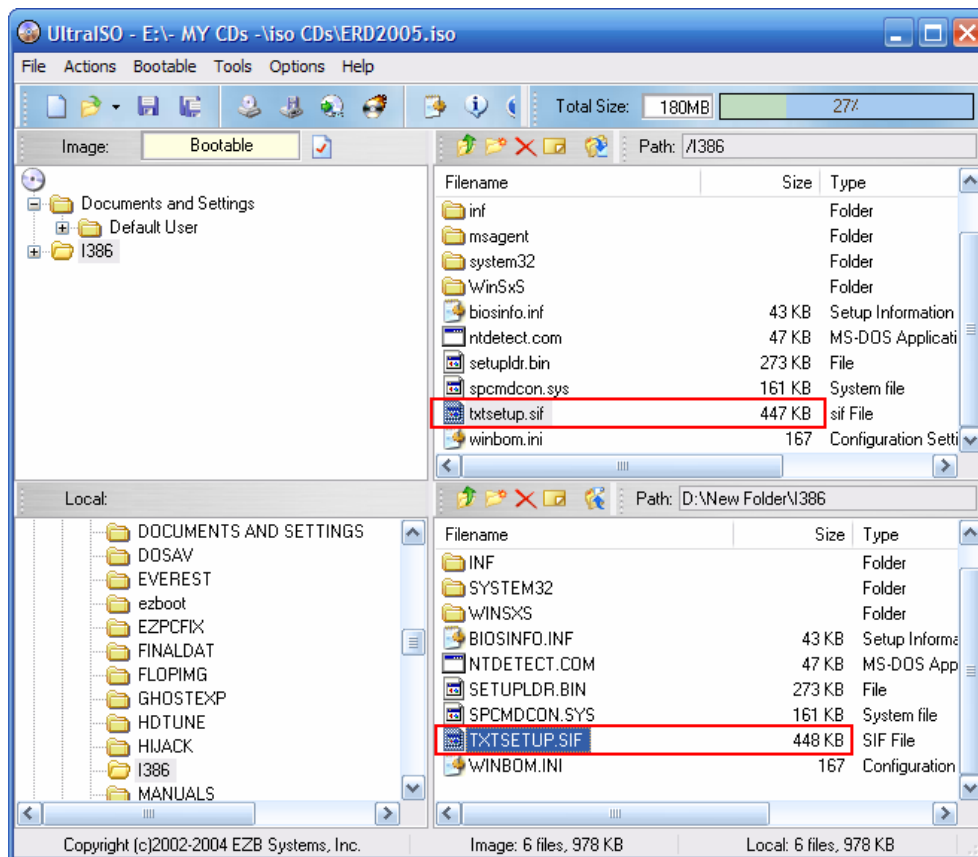


it is so clear that the content of each folder is different than the other

so we will extract the content of the folder " BootCD " into the same named one in our working folder also named " BootCD "

i hope you got this one clear as it is a very important one

An other example :



So now i have added the 8cm cd to the working folder in the lower part , and i want to add the ERD one to the CD ... but what i get is duplicated files, they both have the same name and extension , but they differ in size ... which mean that each one have its own commands inside it and it can not be replaced.

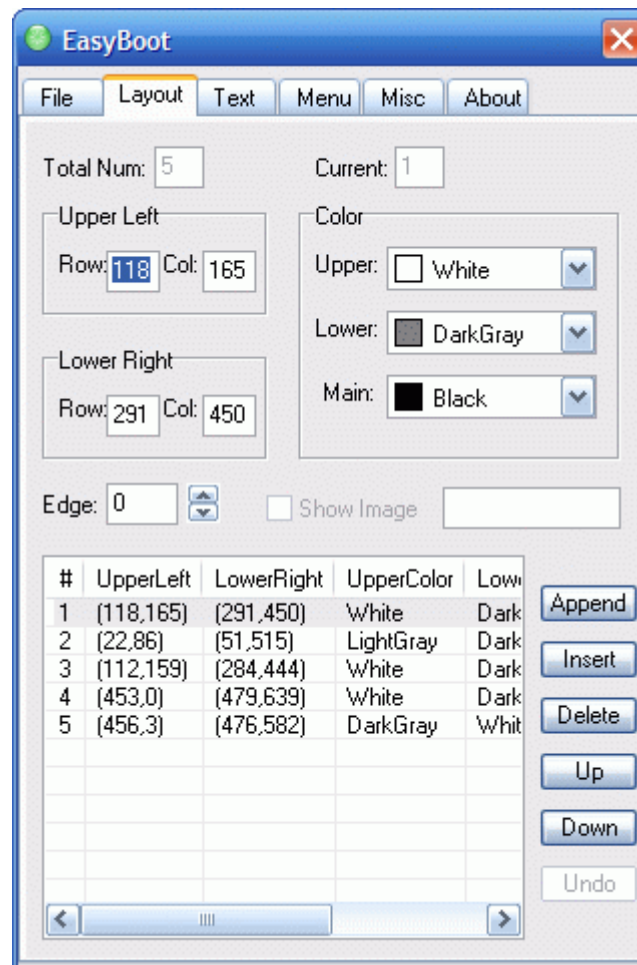
So in such a case it is up to you to make your choice which one to add ? that is your question and only you who can answer it

- my answer was to go for the 8CM one as it do include ERD already, so i did select it

By time you will know that some CDs can not be added together as they do have duplicated files and folders, such as : ERD - 8CM - WinPE - Bart's PE - miniPE

What i recommend to you is to open each iso CD alone and get used to the folders and read the names ... take your time in this , by time when you open a CD you will know if it have a duplication or not ... this is optional for sure

Now it is time to use Easyboot



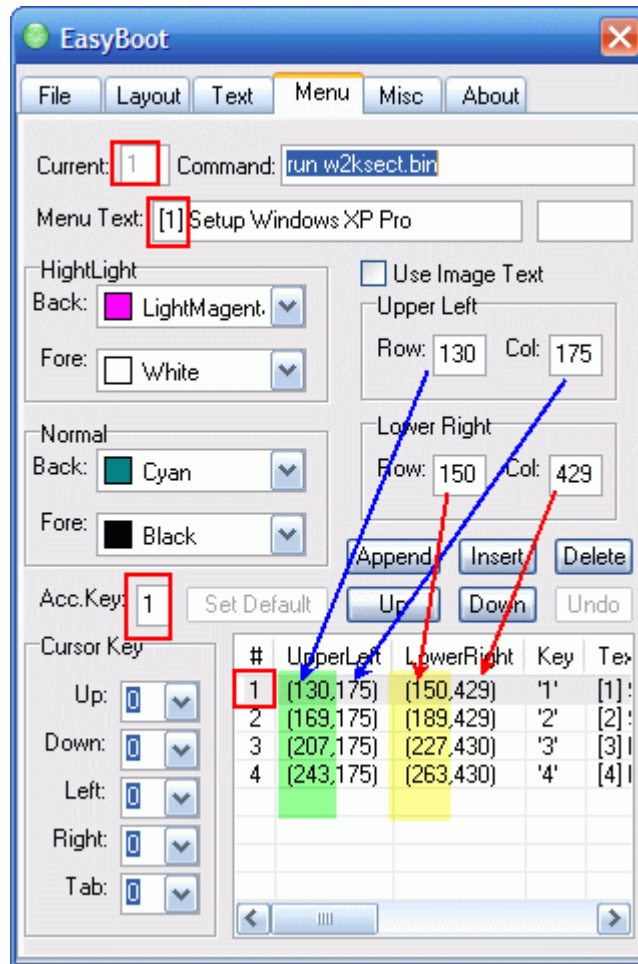
- The layout is like the shadow to the menu and the text you place in the working screen on the background , select any from the menu and it will show you the color and the details about it.
- Use the Append, Insert, Delete, Up and Down to arrange them



This is the main program window, just note that you will have to press "Open" and browse to the working folder then locate the cdmenu.ezb there

- the logo can be changed by anything you like, it is like the splash screen, i have disable this and i have also disabled the wait time, you can adjust the wait time up to 60 sec, but i do not recommend to have a waiting time ... again it is up to you

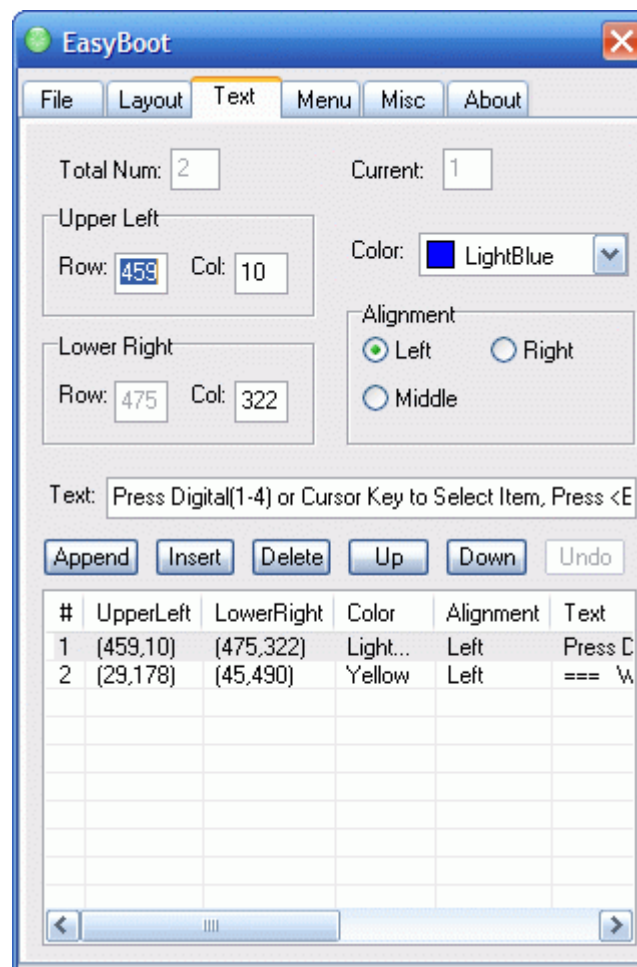
- P : is to set a password if you want so



This is what i really care about ...

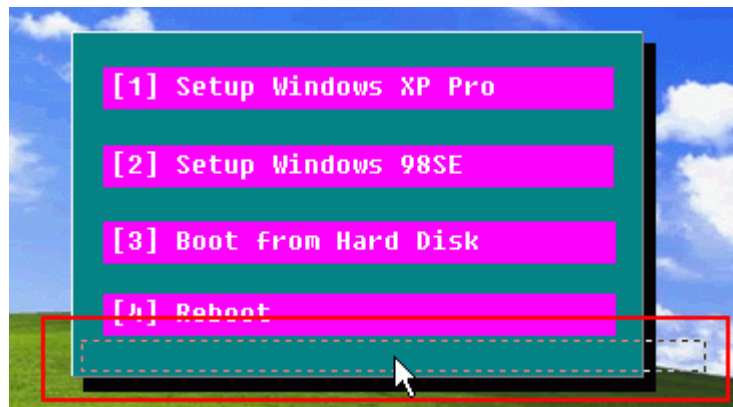
- to arrange the commands in the menu one by one in a good manner you should keep the ratio of each one the same
- the Col is better to be a fixed finger in both ones, 175 for all and 429 for all too or what ever you like for sure
- the upper Row is 130 , now we add a fixed finger to it, say 39 as in the program, so the next one is 169, and the one next to it should be 208 and so on
- you may for the Reboot and Boot from HD commands to move the items a little down or what ever you want as to separate them from the main commands
- note the red squares where the item have number 1 in the list and that number is fixed about for every thing concerning the command... sure the next item in the menu will be 2 and so all the things related to it should be 2 also and so on, just remember to check that before you move to next item
- pick the colors you want for you items in the menu either when they are normal or highlighted... but note that the program preview window only show the highlighted ones, so as a tip adjust the normal colors in the highlighted area and when you make up your mind on something go and make it in the normal ones, by this way you will be able to preview both of your selections

- in the command area we write down [run] then [space] then [bootfilename.bin] you remember i told you we will save the boot files into a bin format
- for hiren's CD for example, the command line can be as the following [run hirens7.bin] , this is according to the name you picked for your boot file



here in the text tab you adjust the color of the text lines you add

- the text line ones are differ than the items in the menu as they are not connected to any command and they do not highlight
- you can set the alignment to what ever you like and also detrmine the size and position of each text file from the upper and left figers and select its color as well for sure



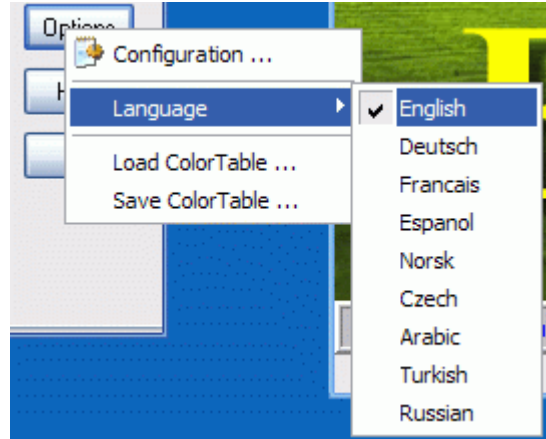
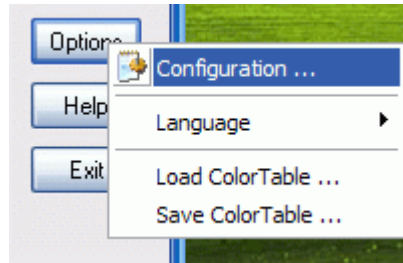
to add a new item to the menu, click on any previous made item and then a new box will be available

drag that box with your mouse to where you want to place it, then make right click, the mouse will go to the edge where you can manage its width and height

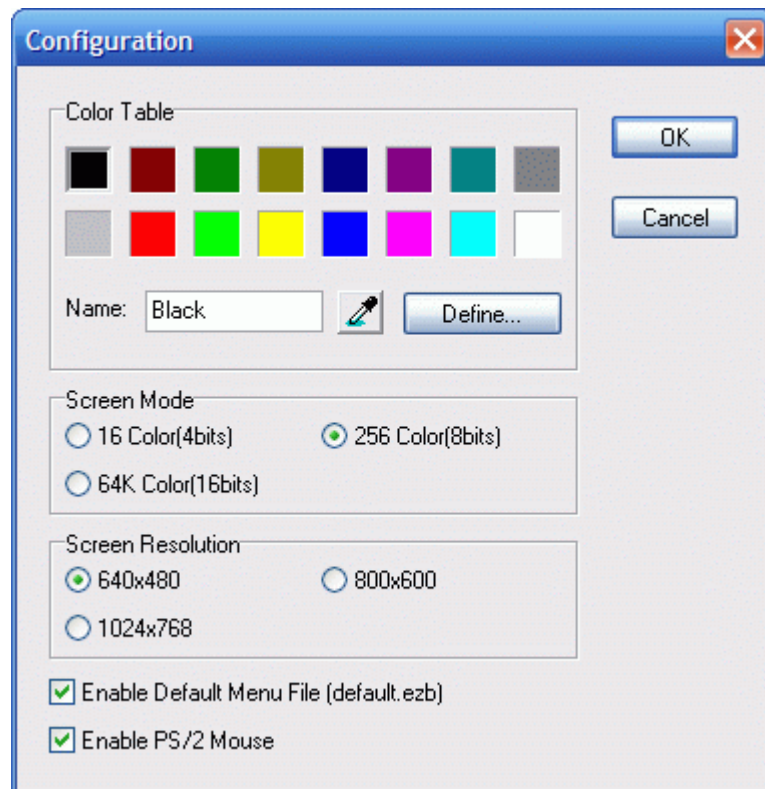
then when you want to fix it in a certain place make a left click

Repeat that as long as you want

it is better to expand the menu background - green and black shadow one - before you add new items to the menu



in the main menu tab, click on Options then you can change the language if you want

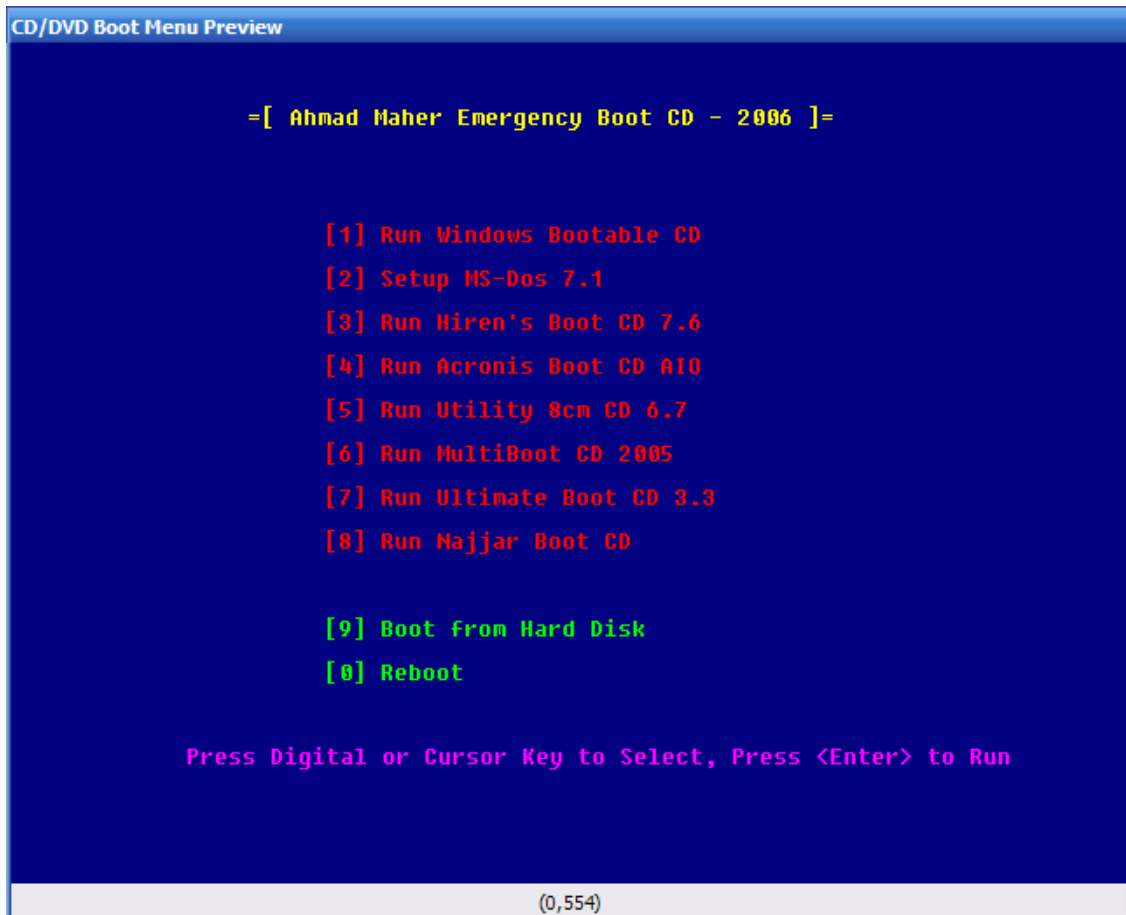


Also from Options button, go to Configuration where you can set your logo and background resolution and other options as enable the mouse and the screen mode

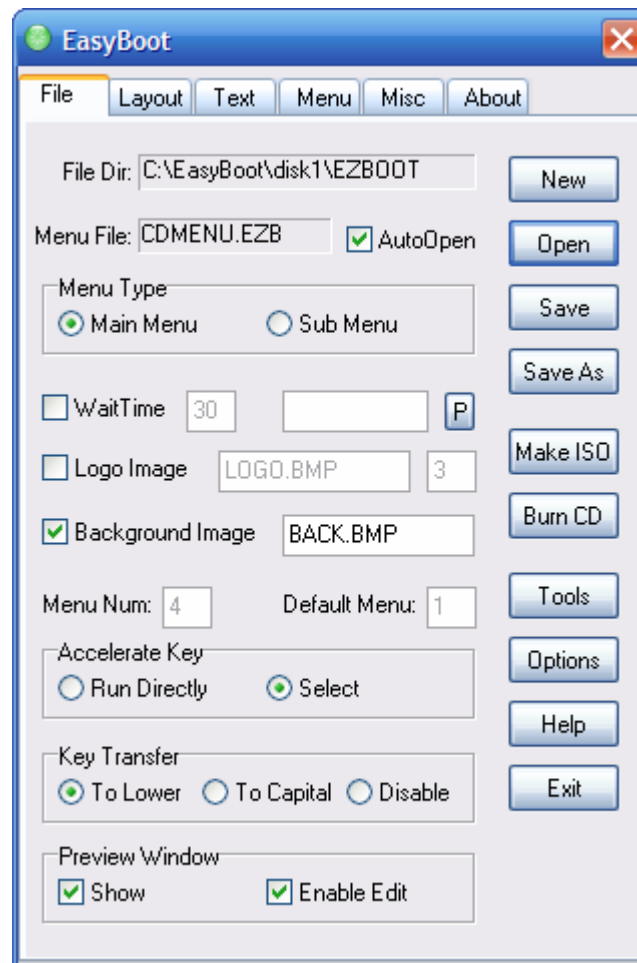
- Resolution is better to be kept at the lower thing 640x480 as you may work on an old PC or graphic card, this also done for the screen mode

- Enable the mouse is recommended as you may be working on a PC with a damaged keyboard or a multimedia one which may make a conflict on Dos mode

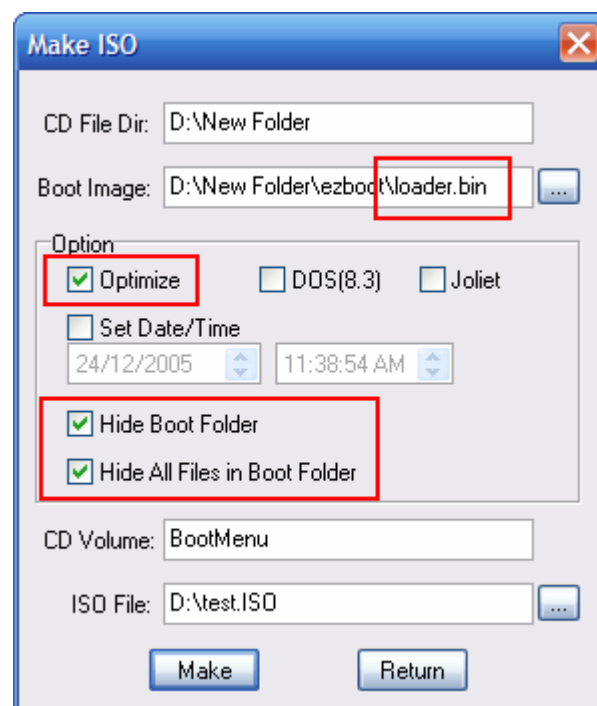
After you are done, you should have something looking like this :



Now when you are done , it is time to make your iso CD, from the main menu tab go to [make iso] button and click it



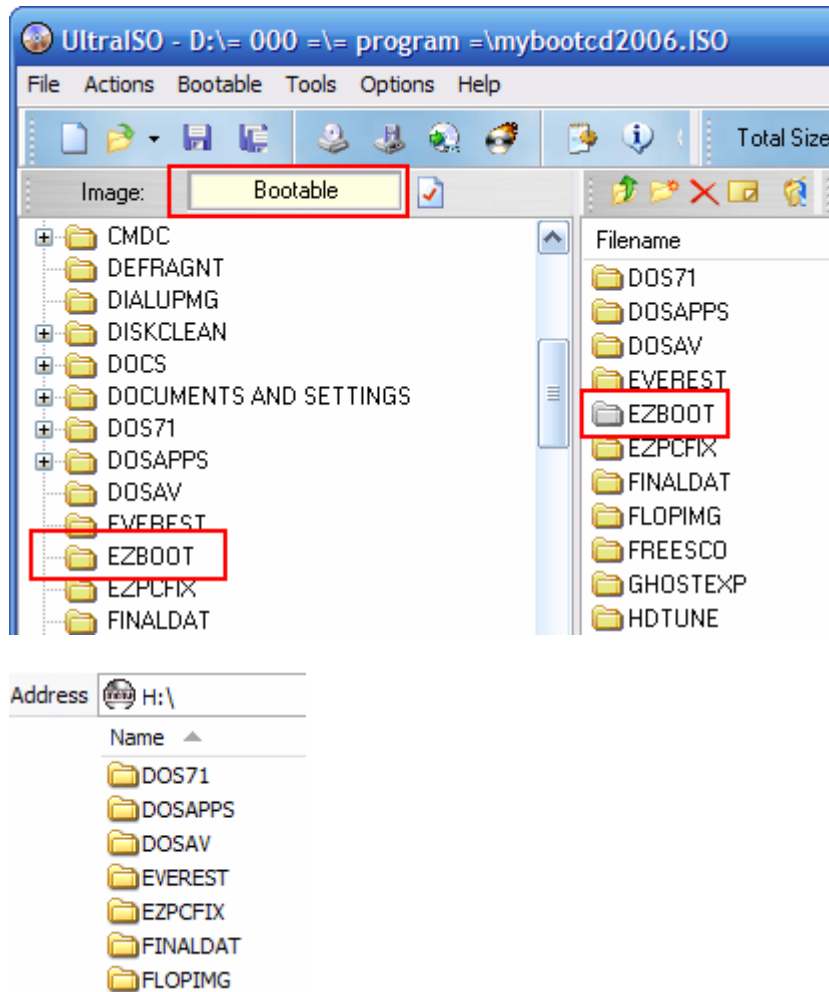
you will have a window like this one



make sure that the selected boot image is [loader.bin] and as you can see the address is set to my work folder not to C:/

-When you select Optimize then the program will reduce the size if it is possible when there is a duplicated files it use special algorithm to ensure storing same file only once, thus dramatically reduces CD space.

- it is better to hide your boot folder and its files , as to say to hide your work ... Although this file will appear in ultraiso for example but it is hidden in normal windows explorer one even if show hidden files is enabled



That will be all

I hope i was able to make this tutorial easy for you and am sorry for my English :) plz try to understand it ...

This file was made as a special request from Markat ...

Wishing you all the best.

- Done by : Ahmad M. Maher

Cairo - Egypt - 30th. December 2005 Happy 2006 to you all :)